



AREA & COMMUNITY MAPS

Official TAR Maps of Telluride, Mountain Village & Surrounding Communities

Mountain Rose Realty | Anne-Britt Østlund | Telluride, Colorado

Navigating the Telluride Region

The Telluride region spans a breathtaking stretch of southwest Colorado's San Juan Mountains, encompassing the historic town of Telluride, the modern alpine enclave of Mountain Village, and a constellation of surrounding mesas, ranches, and communities. Understanding the geography is essential to understanding the real estate — each area has its own character, zoning, HOA structure, and lifestyle.

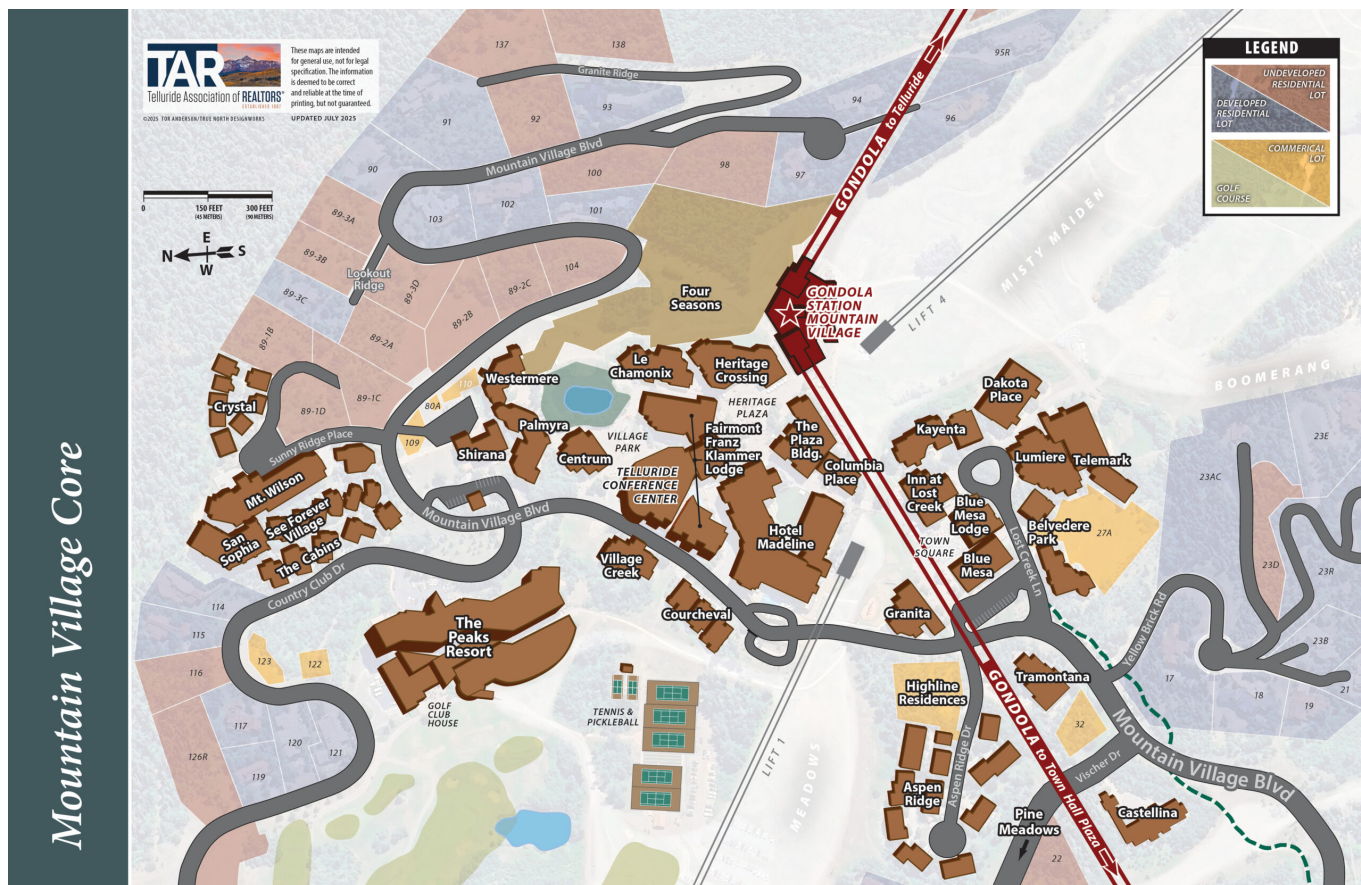
The maps in this guide are official publications of the Telluride Association of Realtors (TAR), updated in 2025. They are provided here as a resource to help you orient yourself to the region as you begin your property search. We encourage you to use these maps alongside our community guides and in conversation with Anne-Britt, who has spent over 23 years exploring every corner of this extraordinary landscape.

Community Overview

Community	Elevation	Character	Distance to Telluride
Telluride Town	8,750 ft	Historic, walkable, vibrant arts scene	—
Mountain Village	9,545 ft	Modern luxury, ski-in/ski-out, gondola access	~3 mi (gondola)
Ophir	9,700 ft	Secluded, artistic, dramatic scenery	~8 mi south
Placerville	6,900 ft	Agricultural, ranches, river valley	~20 mi north
Deep Creek Mesa	~7,500 ft	Rural, open land, mesa views	~15 mi north
Hastings Mesa	~7,200 ft	Equestrian, agricultural, privacy	~20 mi north
Wilson Mesa	~8,500 ft	Forested, secluded, Wilson Peak views	~12 mi north
Turkey Creek Mesa	~7,800 ft	Open ranchland, big sky views	~18 mi north
Aldasoro Ranch	~9,200 ft	Luxury ranch community, equestrian	~7 mi north

Mountain Village Core

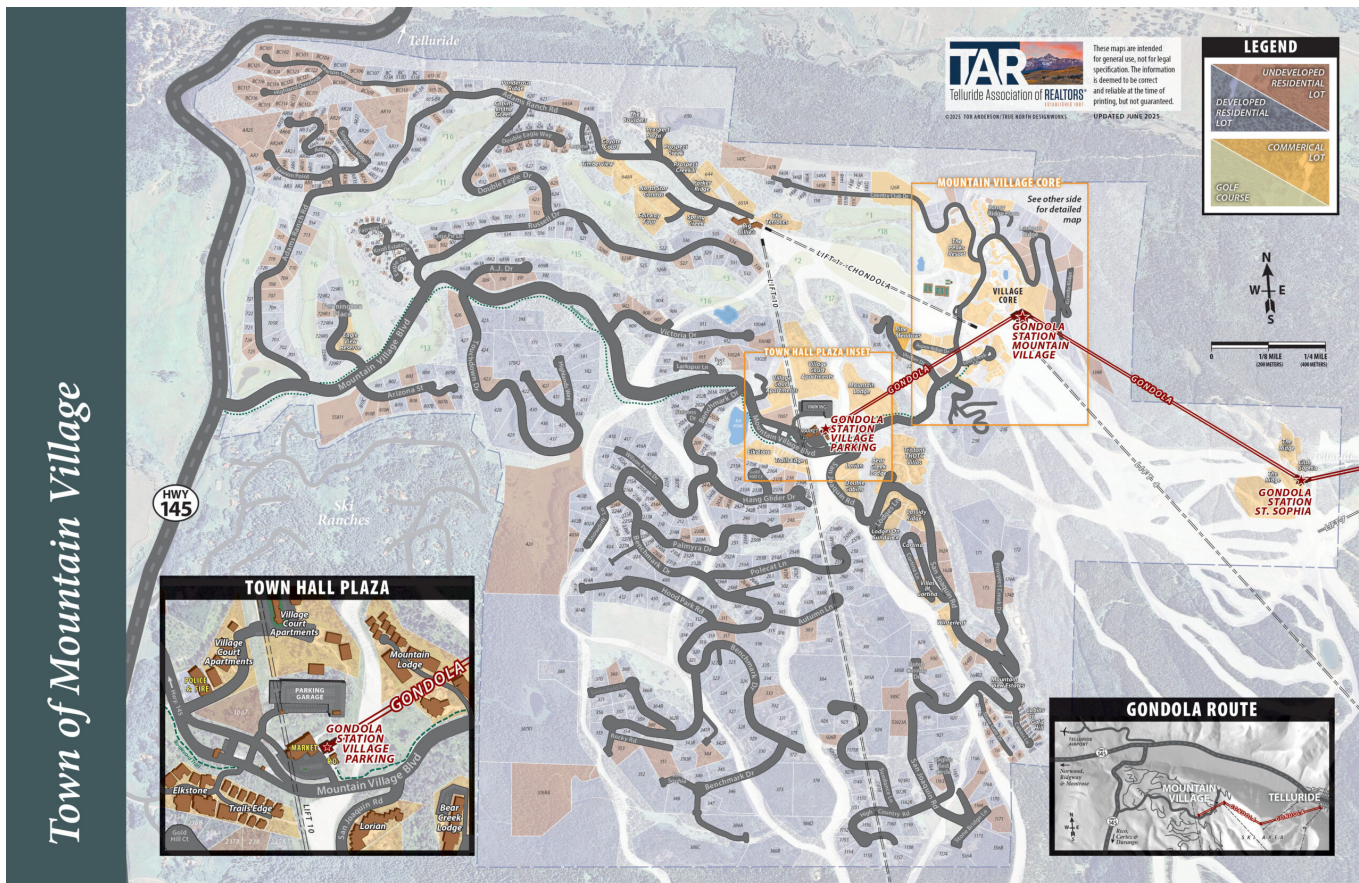
The heart of Mountain Village, showing the gondola station, ski lifts, luxury hotel properties (Four Seasons, Peaks Resort, Hotel Madeline), and residential neighborhoods.



Source: Telluride Association of Realtors (TAR) – tellurideassociationrealtors.com/maps/ – Updated 2025

Mountain Village Main

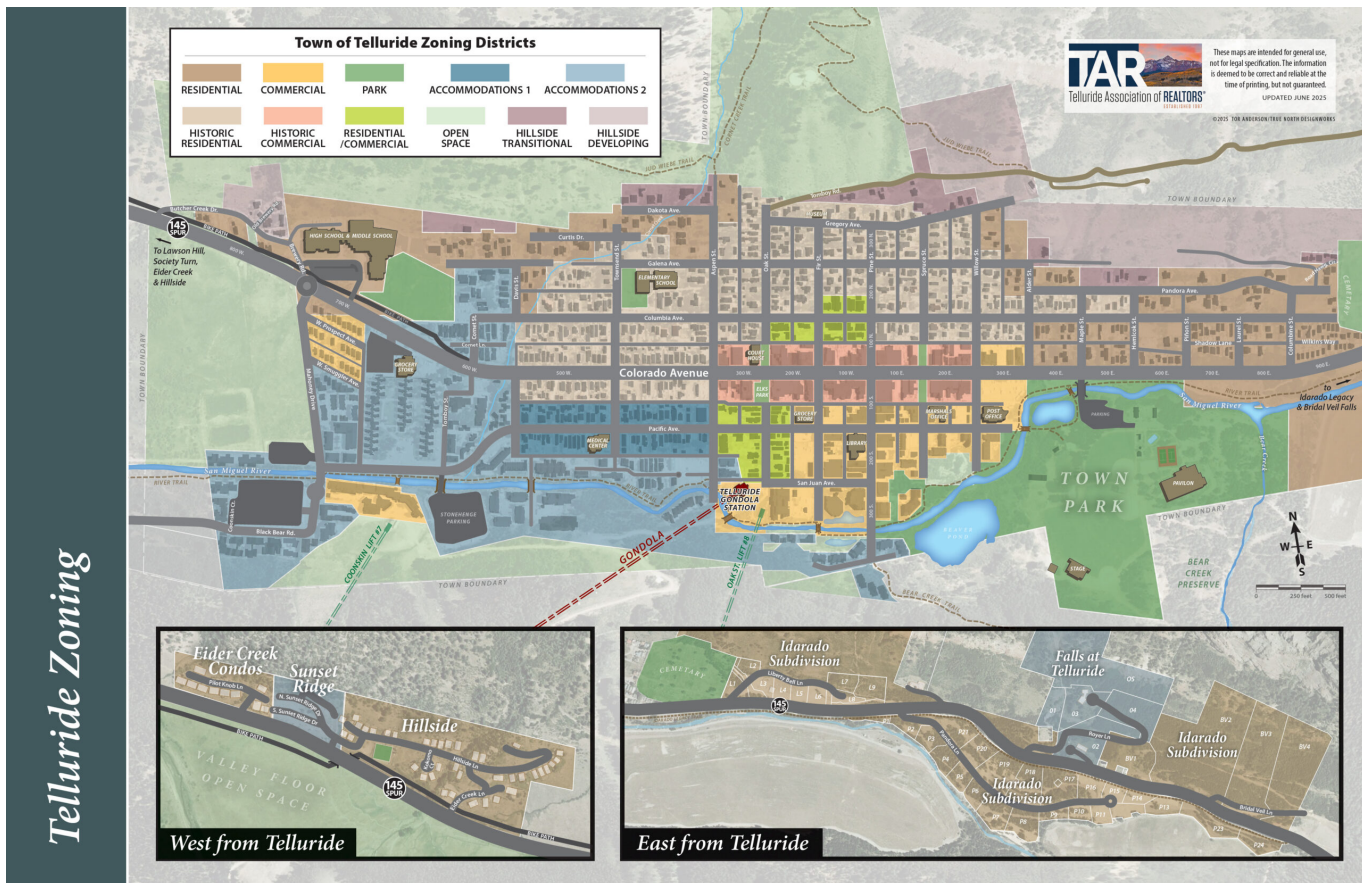
The broader Mountain Village area including all residential neighborhoods, the golf course, and the full extent of the resort community boundaries.



Source: Telluride Association of Realtors (TAR) – tellurideassociationrealtors.com/maps/ – Updated 2025

Telluride Zoning Map

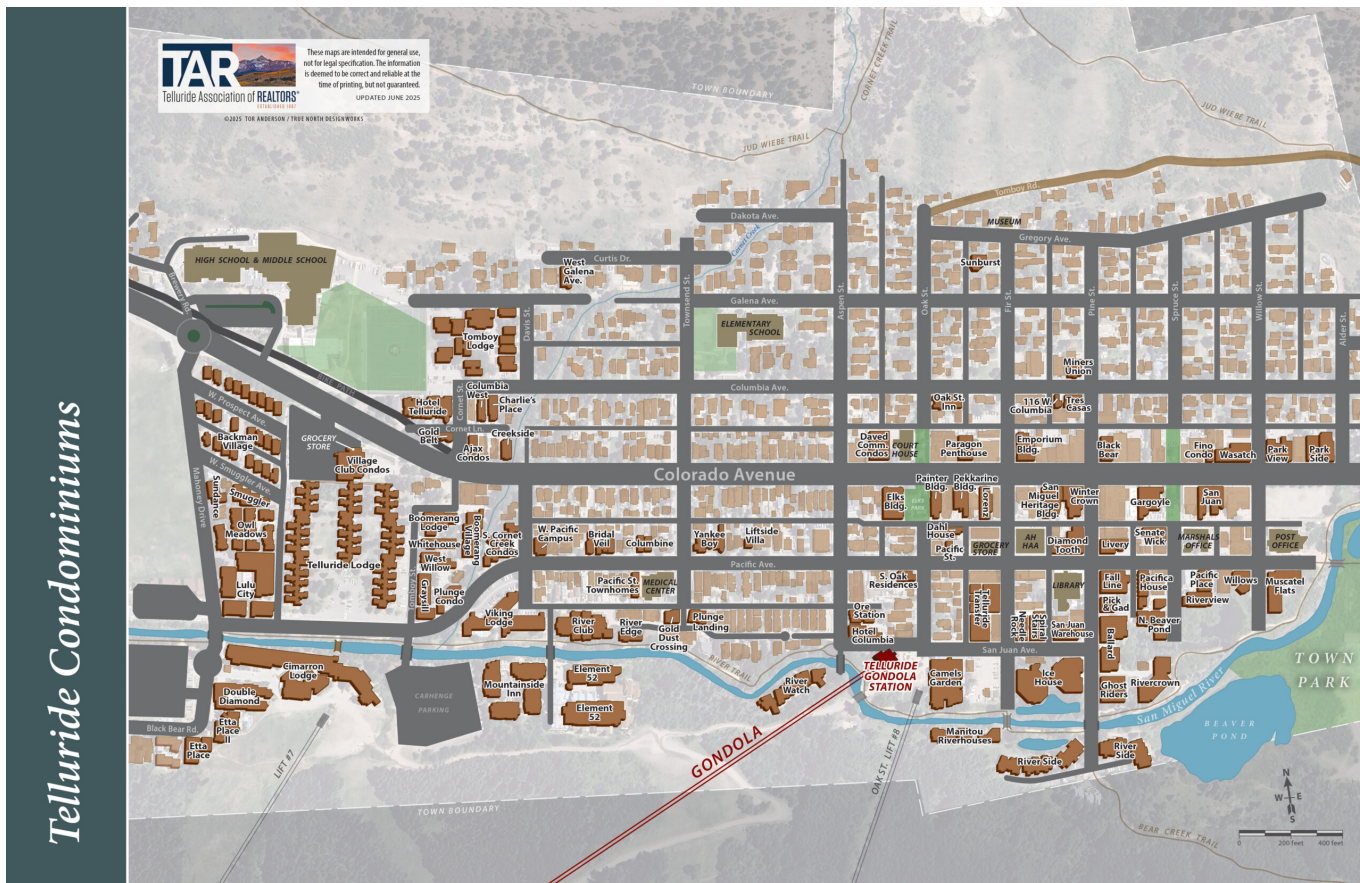
Official zoning map of the Town of Telluride showing residential, commercial, and mixed-use zones. Essential for understanding development rights and restrictions.



Source: Telluride Association of Realtors (TAR) – tellurideassociationrealtors.com/maps/ – Updated 2025

Telluride Condominiums

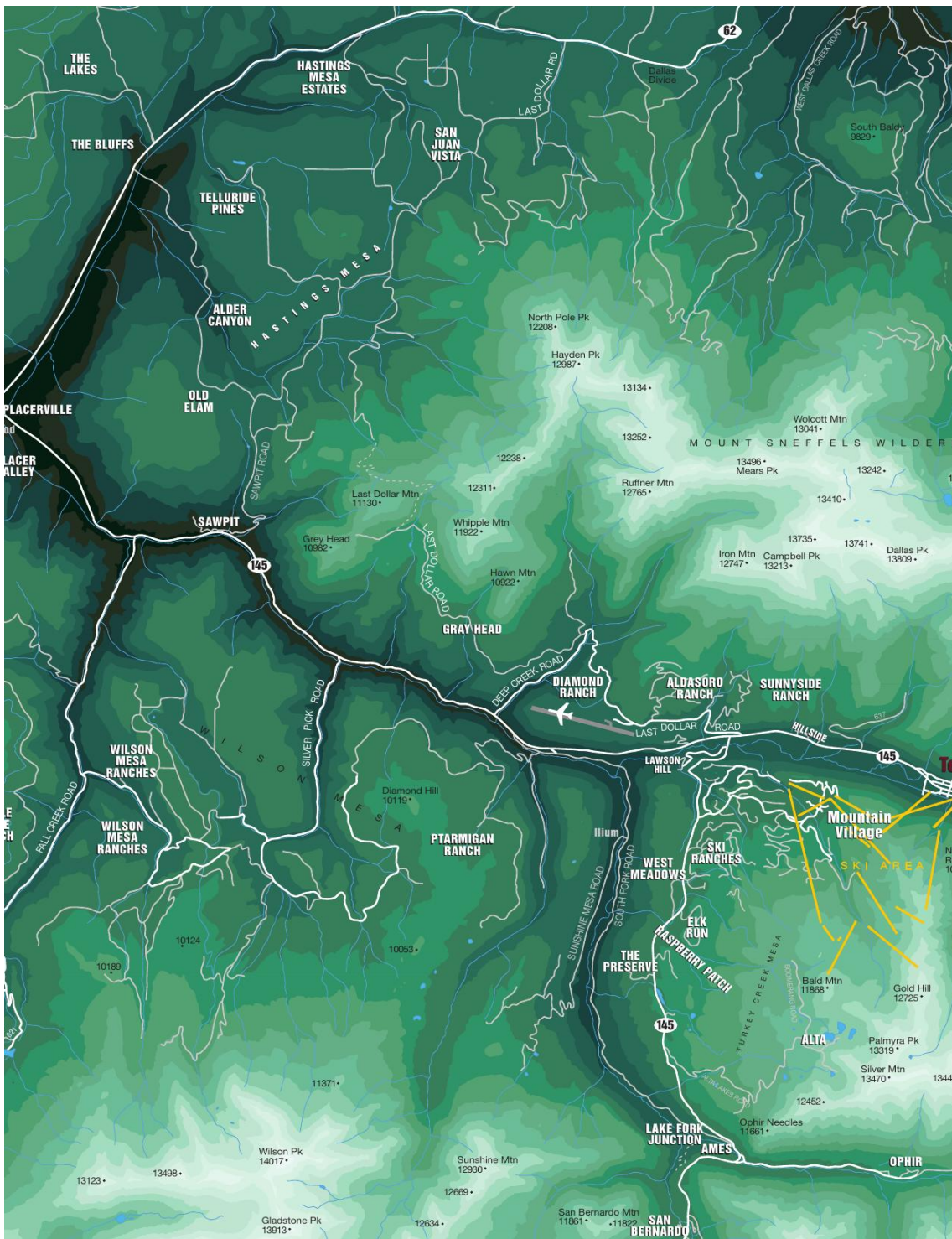
A comprehensive map of condominium developments within the Town of Telluride, showing unit locations and complex boundaries.



Source: Telluride Association of Realtors (TAR) – tellurideassociationrealtors.com/maps/ – Updated 2025

Telluride Region Overview

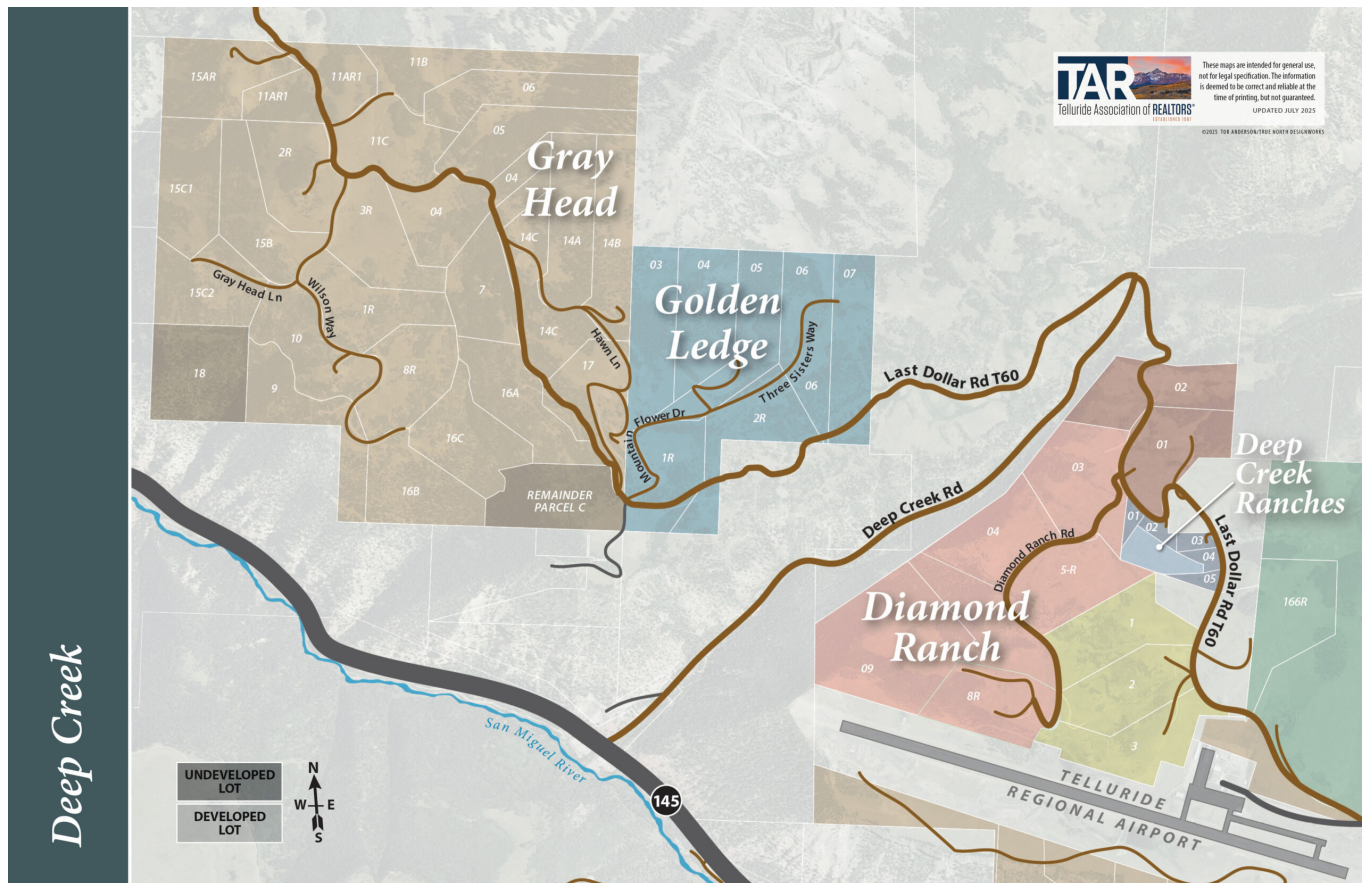
The full regional map showing Telluride, Mountain Village, and the surrounding mountain communities, roads, and public lands.



Source: Telluride Association of Realtors (TAR) – tellurideassociationrealtors.com/maps/ – Updated 2025

Deep Creek Mesa

Rural mesa community north of Telluride offering open land, agricultural properties, and dramatic San Juan Mountain views at a more accessible price point.



Source: Telluride Association of Realtors (TAR) – tellurideassociationrealtors.com/maps/ – Updated 2025

Hastings Mesa

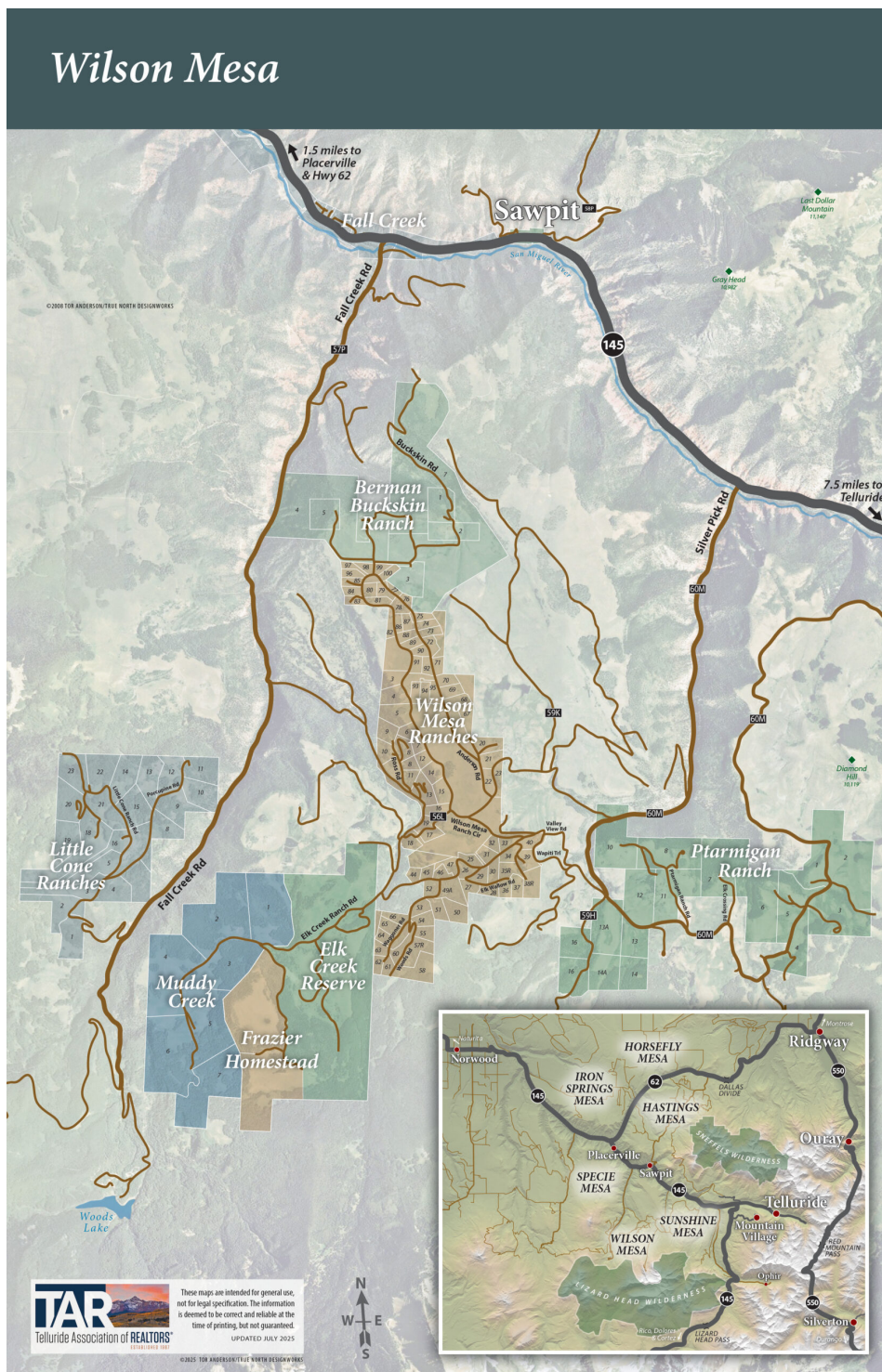
Equestrian-friendly mesa community known for privacy, agricultural character, and sweeping valley views. Popular with buyers seeking acreage and seclusion.



Source: Telluride Association of Realtors (TAR) – tellurideassociationrealtors.com/maps/ – Updated 2025

Wilson Mesa

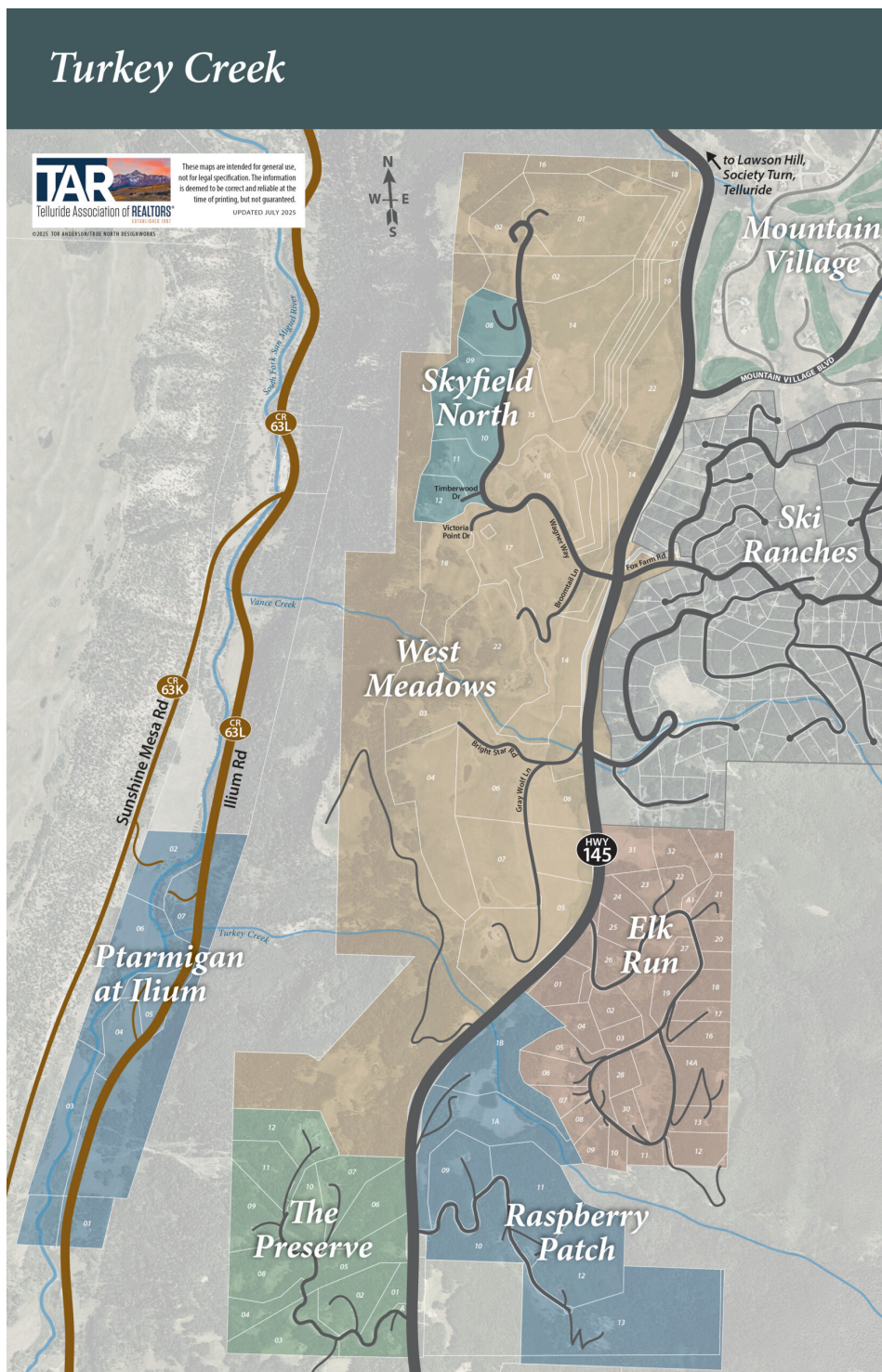
Forested mesa community with some of the most dramatic Wilson Peak views in the region. Properties here offer exceptional privacy and natural beauty.



Source: Telluride Association of Realtors (TAR) – tellurideassociationrealtors.com/maps/ – Updated 2025

Turkey Creek Mesa

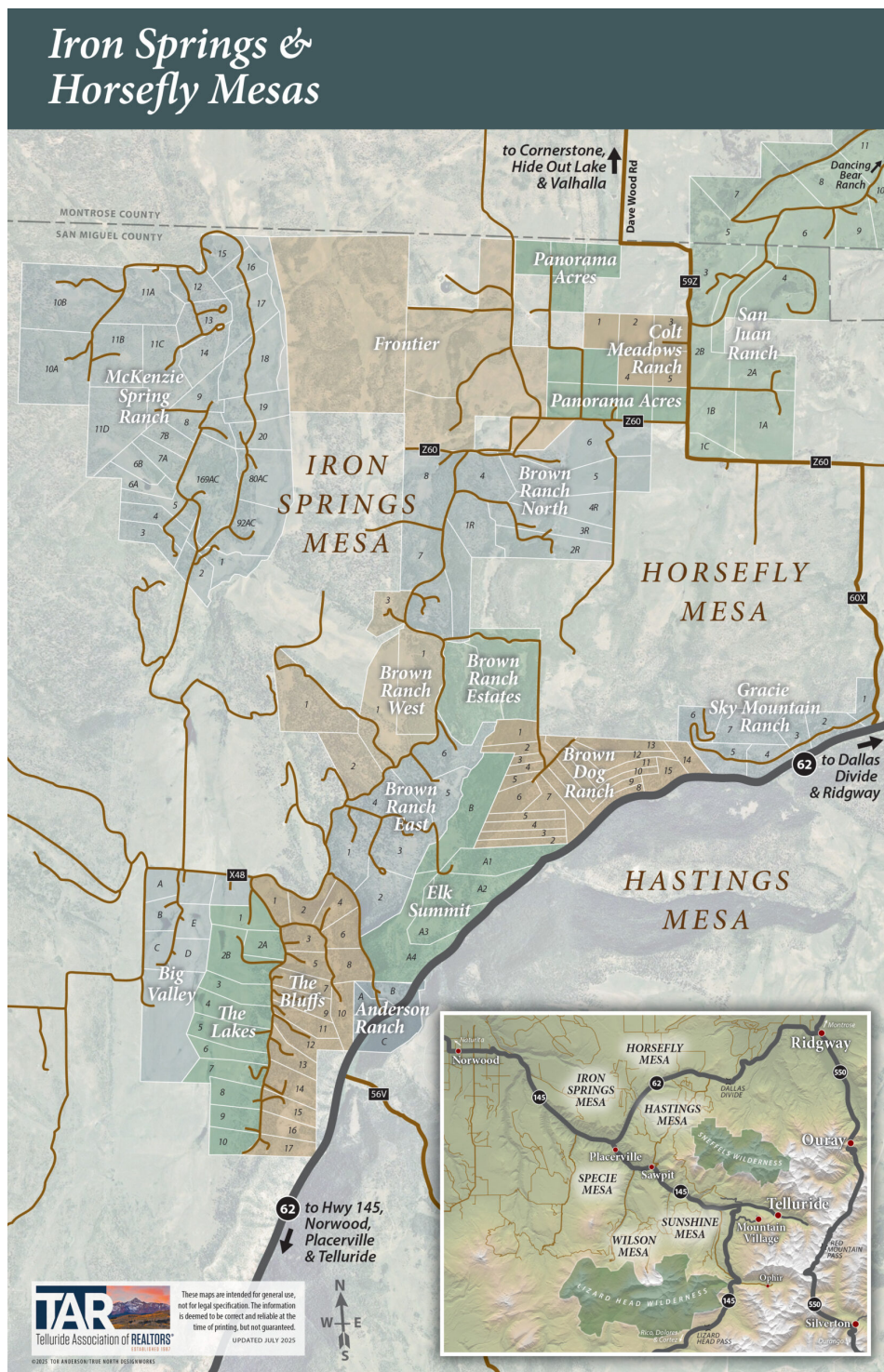
Open ranchland mesa offering big-sky views and a genuine rural Colorado lifestyle, with proximity to the Telluride region amenities.



Source: Telluride Association of Realtors (TAR) – tellurideassociationrealtors.com/maps/ – Updated 2025

Iron Springs & Horsefly Mesa

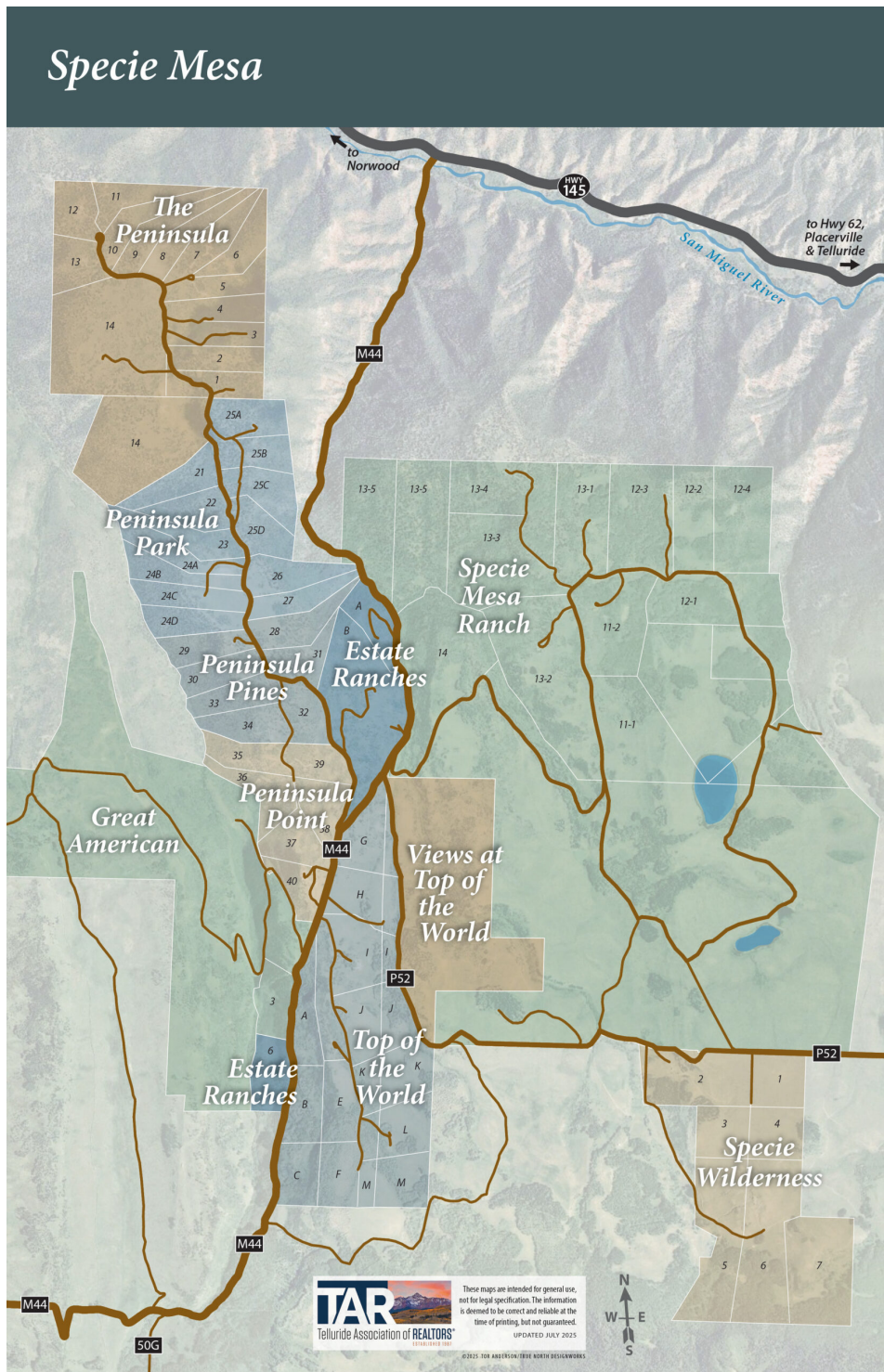
Two adjacent mesa communities offering rural residential and agricultural properties with access to public lands and recreational trails.



Source: Telluride Association of Realtors (TAR) – tellurideassociationrealtors.com/maps/ – Updated 2025

Specie Mesa

A quieter mesa community offering rural character and proximity to the Telluride region without the resort price premium.



Source: Telluride Association of Realtors (TAR) – tellurideassociationrealtors.com/maps/ – Updated 2025

A Note on Using These Maps

These maps are intended for general reference and orientation purposes only. They are not legal survey documents and should not be relied upon for boundary determinations, legal descriptions, or title purposes. All property boundaries should be verified through a licensed surveyor and the official county records of San Miguel County.

Anne-Britt's Insight

I have walked, skied, and driven every road on these maps. If you want to truly understand a neighborhood — its morning light, its wind patterns, its neighbors — there is no substitute for an in-person tour. I would love to show you around.

Ready to Begin Your Telluride Journey?

(970) 759-4886 | ab@mountainroserealty.co | mountainroserealty.co | [@themountainrose](https://www.instagram.com/themountainrose)



Anne-Britt Østlund

Founder, Mountain Rose Realty | Telluride, Colorado

As a Realtor® and founder of Mountain Rose Realty, Anne-Britt represents Southwest Colorado's finest properties. With more than 23 years of full-time experience in the Telluride market and a commitment to donating 1% of net income to local nonprofits, she is your trusted Lifestyle By Design advisor. Boutique, independent, and unapologetically personal — Mountain Rose Realty is built on the belief that every client deserves a fully white-glove experience. Unique, like you!

(970) 759-4886 | ab@mountainroserealty.co | mountainroserealty.co | [@themountainrose](https://www.instagram.com/themountainrose)

© 2026 Mountain Rose Realty. All rights reserved. This guide is provided for informational purposes only and does not constitute legal or financial advice.

CO RE Broker #100040552.